

Mary Queen of Apostles

Facilities Master Plan Update

- The 2009 Parish Audit identified we did not have a Master Plan for the Parish
- Progressive AE was selected to develop our Master Facilities Plan based on our Long Term Plan, Parishioners input, and expert opinions



Dear Parishioners of Mary Queen of Apostles,

The leadership at Mary Queen of Apostles approached Progressive AE to develop a master plan for the campus that creates more space to gather, makes the church accessible, connects the church to Cabrini Hall, and organizes the administration and back of house functions.

Guided by Mary Queen of Apostles’ mission, Progressive AE engaged a large group of parishioners at a town hall gathering. Through a series of exercises, priorities were established and aligned upon. In addition, a facilities assessment was created that reflects the needs of the existing structures and systems. Questionnaires were then sent out to learn more about the needs and priorities of individual ministries. From these priorities, Progressive AE created a set of Design Principles, these guide the project through design and decision making.

- We will create a welcoming and multi-generational environment by providing spaces that are visually and physically accessible to gather, learn, and grow in faith.
- We will improve our facilities to support the stewardship model by creating opportunities and community outreach.
- We will develop a master plan that promotes a sustainable and adaptable parish that will focus on programs and ministries that will thrive in the community.

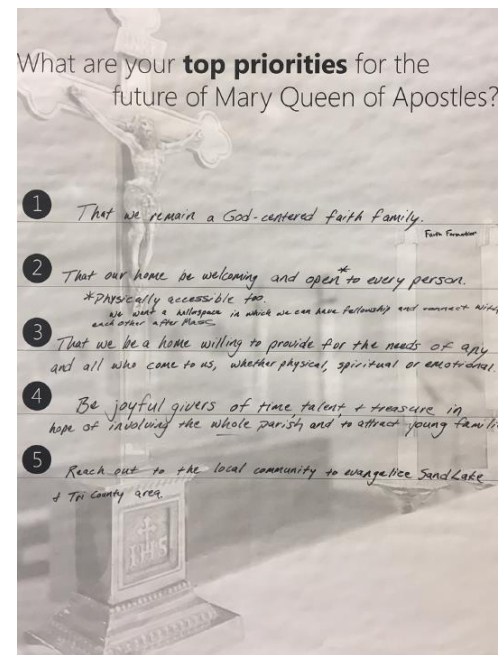
After establishing a set of Design Principles, Progressive AE met with a project decision making group to create a masterplan that meets the goals of the Parish. This two day workshop explores multiple concepts and refines these with the goal of arriving at one final concept. The concept chosen by the decision making group preserves the architecture of the original church, creates an accessible place to gather and worship, creates a gathering space that welcomes in the surrounding community, and visually connects the church to Cabrini Hall.

Following a capital campaign based on the cost estimate, Progressive AE will engage the decision making group to begin the Schematic Design phase. This phase involves an interdisciplinary team that will create a design that aligns with the Parish’s vision, function, aesthetics, and performance expectations for the project.

Jamie L Benvenuto AIA
design architect
office [616.447.3471](tel:616.447.3471)
progressiveae.com

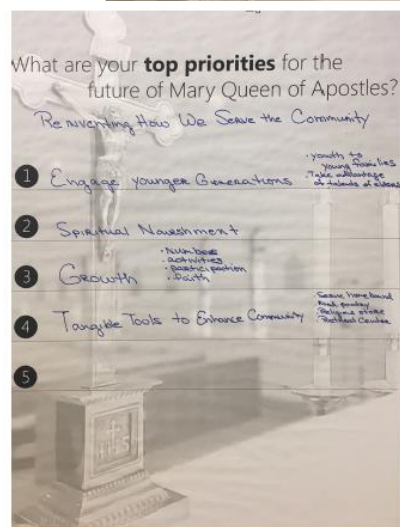
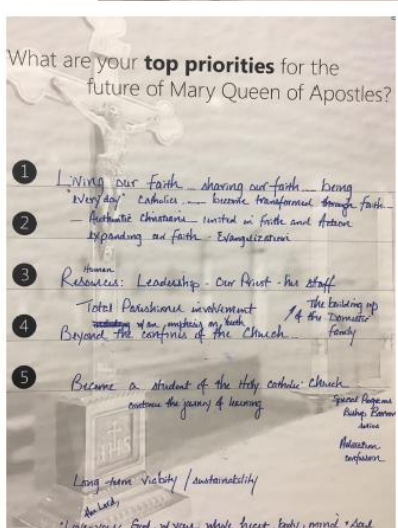
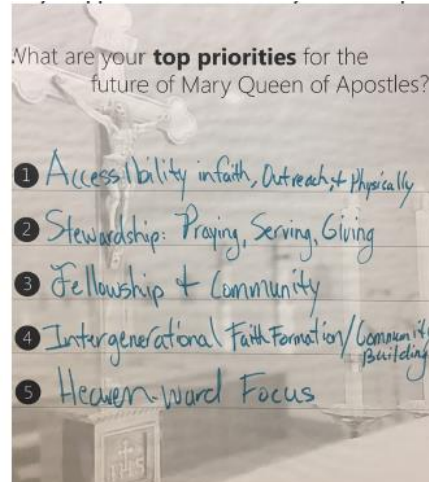
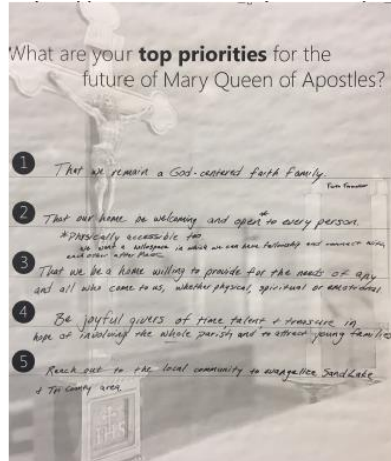
Understanding the Needs of the Parish

August 2017, approximately 60 parishioners took part in an activities based workshop to better explain our current conditions, define strategies, and solidify priorities.



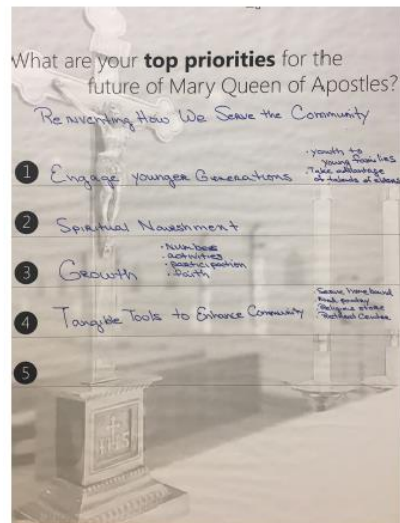
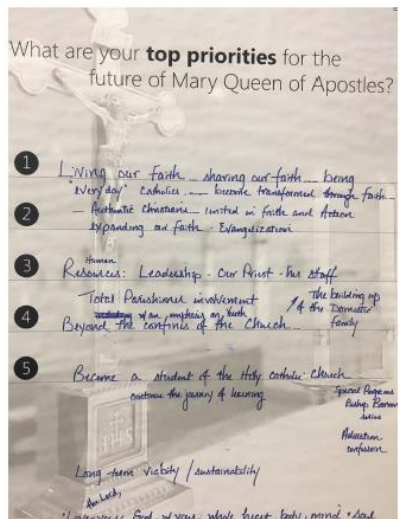
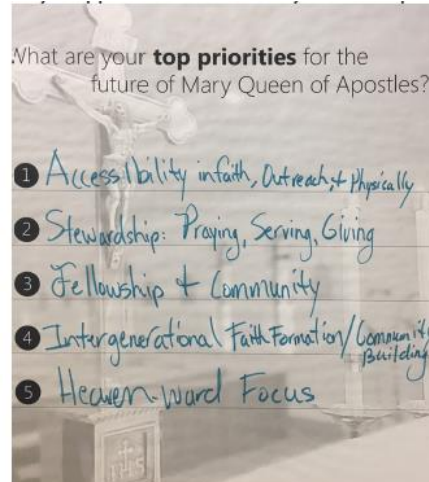
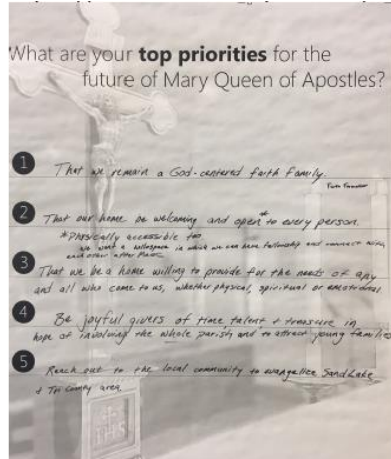
Top Priorities Identified for OUR future

- Welcoming | Inviting | Space To Gather
- Growing
- Accessible
- Participation | Involvement | Stewardship
- Young Families | Youth Ministries | Multi-Inter-Generational
- Utilization UP
- Tools to Enhance



Each consistent with our Long Range Plan

Top Priorities Identified for OUR future



- Music
- Be Authentic
- Sustainability
- Serving | Fellowship | Community
- God Centered | Heavenward Focus | Spiritual Nourishment
- Evangelization | Outreach
- Learning

Each consistent with our Long Range Plan

The Fruits of Our Prayers & Labors

- **Create a welcoming gathering space which is spiritually, visually and physically accessible**
- **Improve our facilities to enhance our stewardship**
- **Develop our Master Plan which promotes sustainable, adaptable, and growth opportunities for OUR faith, ministries, programs, and communities**



Consensus Needs – new space

- **Gathering (2000 sf)**
 - Gathering space, vestibule, coat room, hospitality, restrooms
- **Church (4300 sf)**
 - Church, sanctuary, confessional, sacristy, vesting, choir room storage
- **Administration**
 - Reception, offices, conference room, work room, storage
- **Cabrini Hall**
 - Update mechanical, electrical, carpet and painting
- **Site Improvements**
 - Correct drainage, parking, sidewalks, entry, prayer garden, landscaping, and grotto

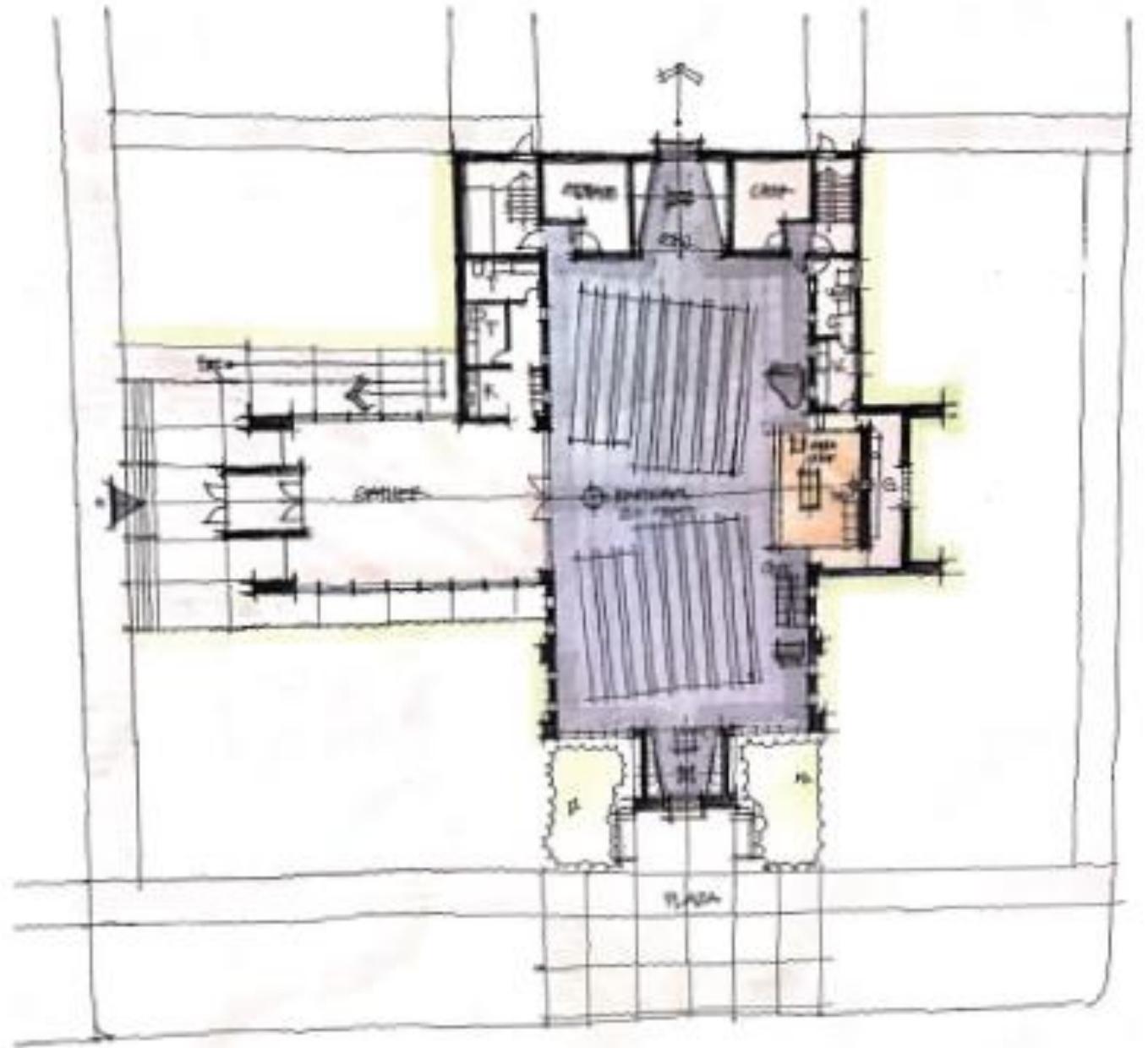
Conceptual Master Plan



Conceptual Master Plan



Conceptual Master Plan



Conceptual Master Plan



Conceptual Master Plan



Conceptual Master Plan



Conceptual Master Plan



Conceptual Master Plan



Conceptual Master Plan



Financial Commitment

- **Sanctuary Renovations and Addition**

- **Estimated Cost: Low - \$1,706,064.00 High - \$2,050,875.00**

- **Rectory Renovations – New Parish Offices**

- **Estimated Cost: Low - \$232,396.00 High - \$266,272.00**

- **Cabrini Hall -**

- **Estimated Cost: Low - \$627,966.00 High - \$714,563.00**

- **Site Improvements -**

- **Estimated Cost: Low - \$381,345.00 High - \$476,682.00**