

PLEDGES TO DATE Outside Parish: \$516,592.00 • Parish \$871,631.20

CONTINUING THE JOURNEY.

I/we would like to make a new pledge/additional gift so we can soon achieve our goal.

My/our financial commitment will be:

- Pledge
- Pledge w/ initial payment
- One-time gift
- Securities
- Other (please explain) _____

Name: _____
Phone: _____



Return this card to the Church Office or place in the Offeratory Basket.

Exterior with Bell Tower Alternate



Exterior in the Base Project



Special Edition Campaign Newsletter

July 2018

Keep Our Vision Growing in God's Merciful Love Capital Stewardship Campaign Newsletter

With praise and thanksgiving to the Almighty God, I would like to announce and invite you to a great event: the Rite of Blessing of the Site for the Construction of the New Church (commonly known as a groundbreaking) on **Sunday, August 19, 2018** after the **10:30AM Mass** with our chief shepherd, Bishop David J. Walkowiak presiding.

In making this joyful announcement, I would like to thank all of you who have supported us to this point. Due to space constraints, I cannot list all the members of the different committees, but the the upcoming church bulletins will list all the committees and members. Please accept our profound gratitude.

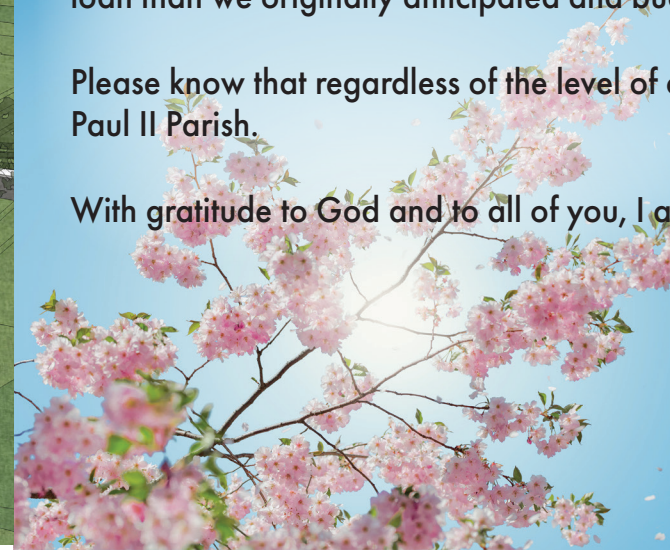
I invite all of you to read this newsletter for it gives you preliminary construction information and where we are in terms of our Growing in God's Merciful Love capital stewardship campaign.

With the groundbreaking, the parish enters the formal construction phase. It is exciting! It is also a good time for us to reevaluate our commitment to the campaign. Is my gift a sacrificial gift? And is my gift over and above the regular offering so that all the ministries in the parish continue to flourish? Please give a prayerful reflection and join us or increase your pledge. If you can fulfill your pledge early, I ask that you please do so. Invoices will coming to the parish office soon and your early payment will help us avoid taking a bigger loan than we originally anticipated and budgeted!

Please know that regardless of the level of contribution, each and every family is most welcome at St. John Paul II Parish.

With gratitude to God and to all of you, I am sincerely yours in the Lord,

Rev. Lam T. Le
Pastor



Save the Date!

Mark your calendar for **Sunday, August 19th**

following the 10:30am mass! Bishop Walkowiak will be in attendance to preside over our groundbreaking ceremony. The ceremony will be followed by a cookout and fellowship. Watch the bulletin for more information. If you are interested in helping to plan this momentous occasion, please contact the Parish office.

St. John Paul II Parish

Capital Campaign Frequently Asked Questions

Fundraising

Q. How much do we need to raise?

A. \$1,000,000 from parishioners and an additional \$1,000,000 from outside our parish family. The remaining \$3,500,000 will come from a diocesan loan, for a total of \$5,500,000. We are limited in how much we can borrow from the Diocese, so it is critically important that all families participate!

Q. How do I know my contribution will be used for the new church and not for another expense?

A. All funds raised will be kept in a separate account that will only be used for the construction of the new church.

Q. How do you know that we can raise \$2,000,000?

A. Prior to launching the capital campaign, Saint John Paul II Parish underwent a feasibility study that included a survey of all registered parishioners and personal interviews. The study showed that \$2M is a reasonable fundraising goal for our parish if everyone participates and contributes. Since launching the campaign, we have continued to register new families, seen our offertory increase, and made national news for the number of new parishioners we welcomed through RCIA. We are confident this momentum will carry us to our goal!

Pledges

Q. How much will I be asked to give?

A. You will not be told to give a specific amount. Everyone is asked to first reflect on his/her individual blessings and then pray about a sacrificial commitment. Your commitment should be over and above your current giving to the church.

Q. How do I decide what I should commit to our capital stewardship campaign?

A. Prayer and reflection! One of the campaign themes is "not equal gifts, but equal sacrifice". Everyone is blessed differently. Everyone cannot give the same amount. If your gift is truly sacrificial, then the gifts are equal in the sight of God. Deuteronomy 16:17 says, "... But each of you with as much as you can give, in proportion to the blessings which the Lord your God, has bestowed on you."

Q. What does "sacrificial" mean?

A. Sacrificial giving is a personal act of giving generously of yourself or your resources as a response to God's immeasurable generosity to you. A sacrificial commitment is one that requires you to change your lifestyle while fulfilling it – perhaps a re-prioritization of how you use your God-given resources. Consider what you would be willing to do or do without. What can you postpone or alter? Everyone is being asked to sacrifice to enable our important facility plans.

Q. What if I'm uncertain about my financial future?

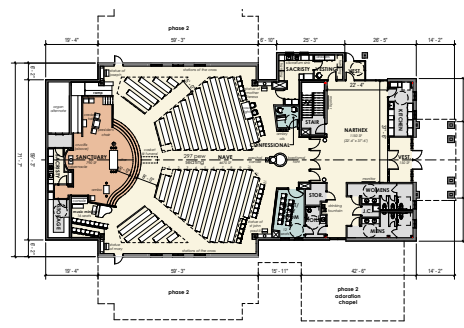
A. No one knows the future, but, everyone should prayerfully consider a sacrificial commitment. Should your circumstances change, you may modify your commitment by notifying the parish office. Pray to know God's direction and trust God as you are led.

Q. Will I have an opportunity to make pledge payments as I desire?

A. Yes. Each parishioner can designate how they wish to fulfill their commitment: weekly, monthly, quarterly, annually, etc. Special giving envelopes will be provided for payments or payments may be made online.

Q. When will I have an opportunity to make my commitment?

A. You must first prayerfully reflect on your blessings and what a sacrificial pledge would mean in your life. Pledge cards are available for parishioners wishing to confidentially register their commitments.



Q. Who will see my pledge?

A. A small confidential team of parish staff will record pledges. Rest assured, this information will not be shared or discussed with anyone.

Q. Can I make my pledge through online giving?

A. Yes, we have an online giving option.

Q. If I elect to make periodic payments (monthly, quarterly, yearly), will I be invoiced as a reminder?

A. Yes, we will send quarterly statements to not only remind you about your payment but also share important updates about the campaign.

Construction/Facilities

Q. What will happen to our current facilities?

A. All current facilities, including the church, will continue to be utilized as the faith formation and outreach center of the parish. The current church will remain as a holy chapel for weddings, funerals, and daily mass.

Q. When will construction begin?

A. The Bishop has given his blessing on our plans, so we have scheduled the groundbreaking for August 19, 2018 following the 10:30am mass. We anticipate the dedication occurring before Christmas 2019.

Q. The case for support shows that the Parish expects to have 600 families by 2018. How will we have space for this projected growth?

A. Our ability to grow is dependent on the space we have available. We know that there is a need for a strong Catholic church in our community. We also know that people are sometimes turned away by a lack of space in our current facility. That is why the construction of the new church is so important!

Q. Is the rectory part of phase I of construction?

A. We know that this is the wish of many of our parishioners; however, due to the cost, the Parish is being asked to wait until after the church is complete.

Q. As our parish continues to grow, will the rectory be large enough to accommodate an associate pastor some day?

A. Yes. As with the new church, we have an eye to the future with the rectory. The planned rectory space will be handicap accessible for a retired priest in residence to assist our pastor. The space also allows for an associate pastor, as well as flexible space that could accommodate short-term residency of seminarians. Having space for additional ministerial people will not only ensure we can accommodate them, but attract them to help further the mission as the parish continues to grow.

Q. Will the church have a bell tower?

A. The bell tower is part of an alternative design (see images on flipside of newsletter.) It will cost an additional \$165,000. If we are able to achieve those funds, we can implement that design. In the base of the project, it includes all the basic support beneath the roof for the parish to install the bell-tower whenever fund is available.

Finances

Q. What about our current debt? Will we be taking on additional debt when construction begins?

A. Our current debt is comfortably managed within our operating budget. We have paid over \$90,000 in principal payments so far. With our continued growth, we anticipate we will accelerate our payments. Our goal is to have the current debt eliminated by the time a new loan from the diocese is obtained for construction. We will look closely at any existing debt before taking on additional debt and ensure that the payments are feasible based on the operating budget at that time. We are proud to be self-sustaining and fully intend to remain that way.

Q. Once our new church is built we will undoubtedly have increased operating costs. Can we afford it?

A. With a new church, we will have additional operating costs which are expected to be easily accommodated by our growing parish family and offertory from these new members. Other churches that have been in similar situations and constructed new facilities have been successful in affording those increased costs.

CONSTRUCTION TIMELINE

2018

June- Site package bid went out

July- Issue bid package for steel, masonry, and concrete

August- Groundbreaking and start of construction

September- Issue bid package for mechanical, electrical, plumbing, acoustics/AV, etc.

November- Approve construction costs for bid package; set guaranteed maximum price for construction

2019

November- Target for construction completion

December- Dedication of new church